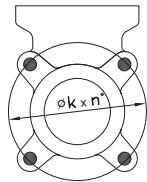


# ФЛАНЦЕВЫЕ СОЕДИНЕНИЯ

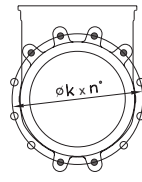
## EN 1092-2 PN10



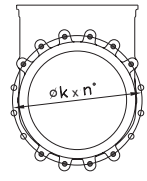
DN50-65



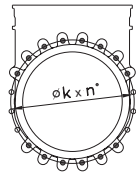
DN80-200



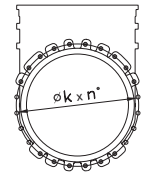
DN250-300



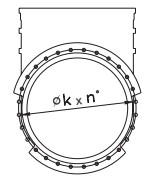
DN350-400



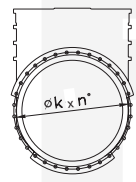
DN450-600



DN700-800

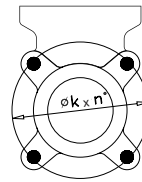


DN900-1000

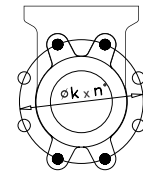


DN1200

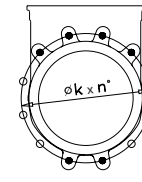
## ANSI Class 150\*



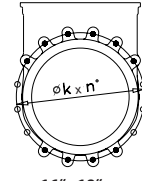
2" - 3"



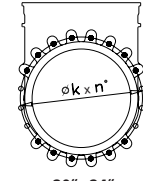
4" - 8"



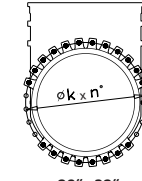
10" - 14"



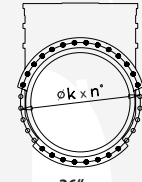
16" - 18"



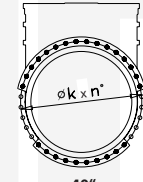
20" - 24"



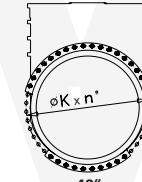
28" - 32"



36"

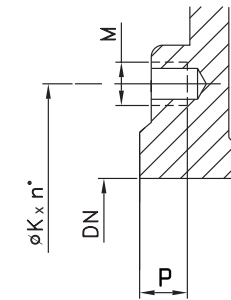


40"



48"

## Условные обозначения



- M** размер болта (метрика согласно PN10 и резьба UNC согласно ANSI)
- P** глубина несквозного отверстия
- K** диаметр отверстий под болты
- n°** количество необходимых болтов
- ◆ несквозные нарезные болты
- ⊕ сквозные болты

### EN 1092-2 PN10

DN	дюйм	n°	M	◆	⊕	P	K
50	2"	4	M-16	4	-	8	125
65	2 1/2"	4	M-16	4	-	8	145
80	3"	8	M-16	4	4	9	160
100	4"	8	M-16	4	4	9	180
125	5"	8	M-16	4	4	9	210
150	6"	8	M-20	4	4	10	240
200	8"	8	M-20	4	4	10	295
250	10"	12	M-20	6	6	12	350
300	12"	12	M-20	6	6	12	400
350	14"	16	M-20	10	6	21	460
400	16"	16	M-24	10	6	21	515
450	18"	20	M-24	14	6	22	565
500	20"	20	M-24	14	6	22	620
600	24"	20	M-27	14	6	22	725
700	28"	24	M-27	16	8	22	840
800	32"	24	M-30	16	8	22	950
900	36"	28	M-30	20	8	20	1050
1000	40"	28	M-33	20	8	20	1160
1200	48"	32	M-36	22	10	22	1380

### ANSI Класс 150\*

дюйм	n°	M	◆	⊕	P	K
2"	4	5/8" UNC	4	-	3/8"	4 3/4"
2 1/2"	4	5/8" UNC	4	-	3/8"	5 1/2"
3"	4	5/8" UNC	4	-	3/8"	6"
4"	8	5/8" UNC	4	4	3/8"	7 1/2"
5"	8	3/4" UNC	4	4	3/8"	8 1/2"
6"	8	3/4" UNC	4	4	1/2"	9 1/2"
8"	8	3/4" UNC	4	4	1/2"	11 3/4"
10"	12	7/8" UNC	6	6	3/4"	14 1/4"
12"	12	7/8" UNC	6	6	3/4"	17"
14"	12	1" UNC	8	4	7/8"	18 3/4"
16"	16	1" UNC	10	6	1"	21 1/4"
18"	16	1 1/8" UNC	10	6	1"	22 3/4"
20"	20	1 1/8" UNC	14	6	1"	25"
24"	20	1 1/4" UNC	14	6	1"	29 1/2"
28"	28	1 1/4" UNC	20	8	3/4"	34"
30"	28	1 1/4" UNC	20	8	3/4"	36"
32"	28	1 1/2" UNC	20	8	3/4"	38 1/2"
36"	32	1 1/2" UNC	22	10	3/4"	42 3/4"
40"	36	1 1/2" UNC	26	10	3/4"	47 1/4"
48"	44	1 1/2" UNC	28	16	1 3/16"	56"

\* от 24", в соответствии с MSS SP44 (Class 150)

Чертёж № IN1210  
Ревизия 01 09.12.2008